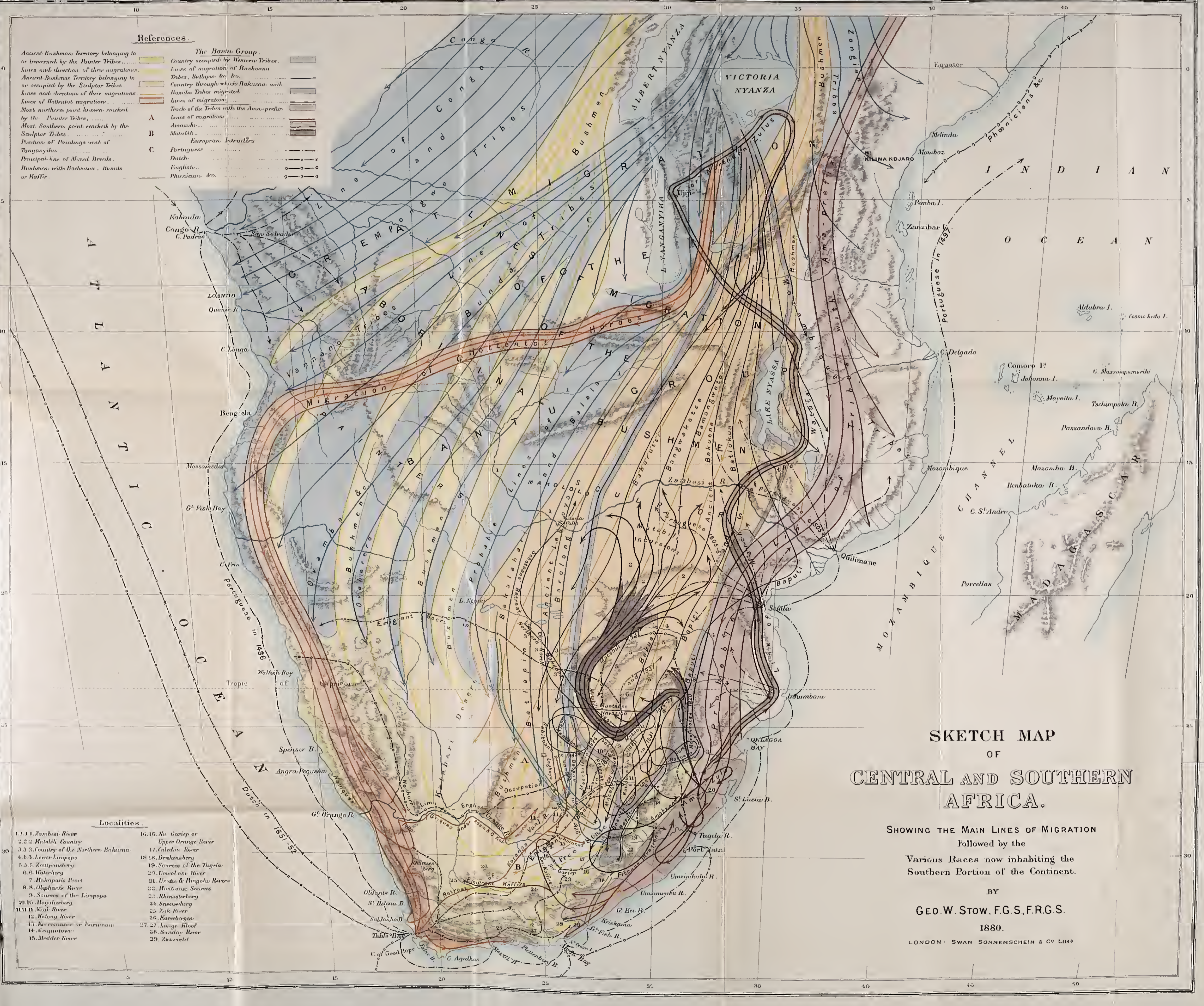


References

Ancient Bushman Territory belonging to or traversed by the Hunter Tribes...  
 Lines and direction of their migrations...  
 Ancient Bushman Territory belonging to or occupied by the Sculptor Tribes...  
 Lines and direction of their migrations...  
 Lines of Hottentot migration...  
 Most northern point known reached by the Hunter Tribes...  
 Most Southern point reached by the Sculptor Tribes...  
 Position of Paintings west of Tanganyika...  
 Principal line of Mixed Breeds...  
 Bushmen with Bachelina, Bushu or Kaffir...

**The Bantu Group**  
 Country occupied by Western Tribes...  
 Lines of migration of Bachelina Tribes, Bantu, &c...  
 Country through which Bachelina and Bantu Tribes migrated...  
 Lines of migration...  
 Track of the Tribes with the Ama-people...  
 Lines of migration...  
 Amuzah...  
 Maubili...  
**European Invasions**  
 Portuguese...  
 Dutch...  
 English...  
 Phoenician &c...



SKETCH MAP  
 OF  
**CENTRAL AND SOUTHERN AFRICA.**

SHOWING THE MAIN LINES OF MIGRATION  
 Followed by the  
 Various Races now inhabiting the  
 Southern Portion of the Continent.

BY  
**GEO. W. STOW, F.G.S., F.R.G.S.**  
 1880.  
 LONDON: SWAN SONNENSCHN & CO. LIMD.

- Localities**
- 1. 1.1 Zambesi River
  - 2. 2.2 Metaboli Country
  - 3. 3.3 Country of the Northern Bachelina
  - 4. 4.4 Lower Limpopo
  - 5. 5.5 Zoutpansberg
  - 6. 6.6 Waterberg
  - 7. 7.7 Malenparie Poort
  - 8. 8.8 Oliphants River
  - 9. 9.9 Sources of the Limpopo
  - 10. 10.10 Magaliesberg
  - 11. 11.11 Kial River
  - 12. 12.12 Kolong River
  - 13. 13.13 Ruessmanse or Duruman
  - 14. 14.14 Griquatown
  - 15. 15.15 Modder River
  - 16. 16.16 Na Goriep or Upper Orange River
  - 17. 17.17 Caledon River
  - 18. 18.18 Drakenberg
  - 19. 19.19 Sources of the Tugela
  - 20. 20.20 Dinslous River
  - 21. 21.21 Dood & Pingola Rivers
  - 22. 22.22 Montaux Sources
  - 23. 23.23 Rhenosterberg
  - 24. 24.24 Sneeuwberg
  - 25. 25.25 Zok River
  - 26. 26.26 Karsberg
  - 27. 27.27 Lange Kloof
  - 28. 28.28 Sunday River
  - 29. 29.29 Zwartkops